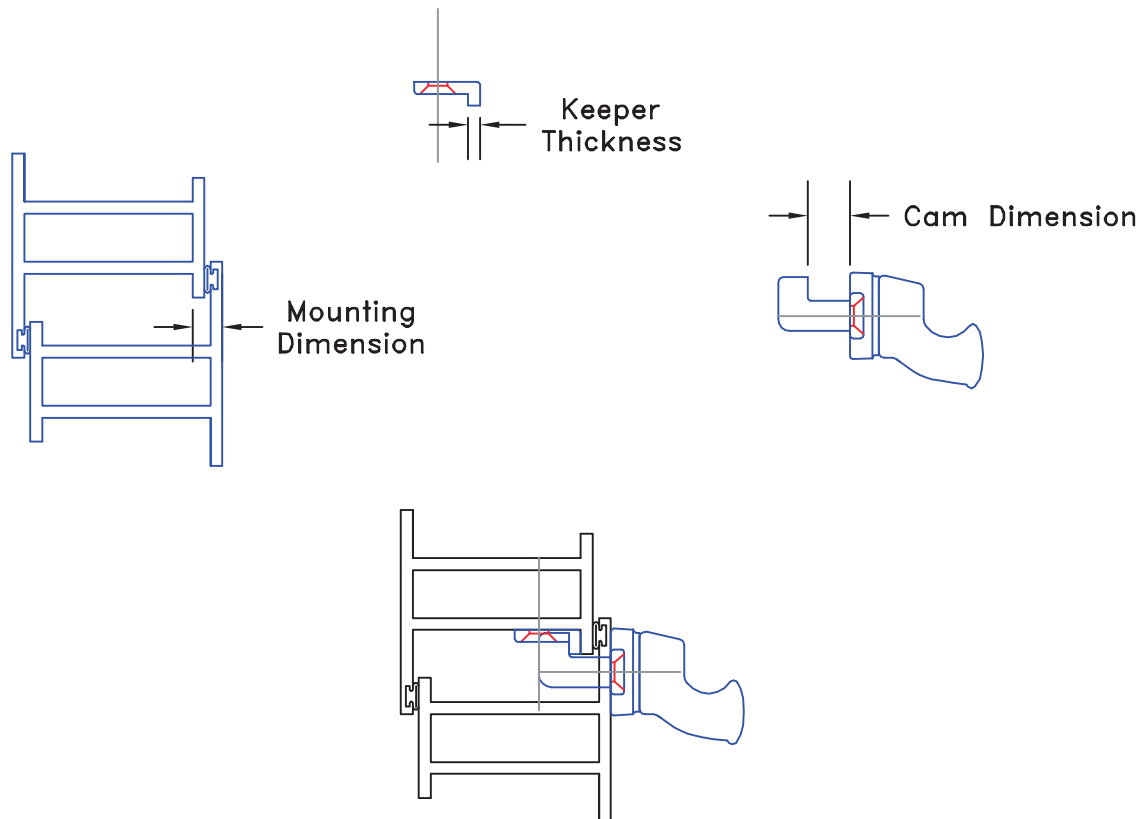


Project In Hardware Selection Guide

Choosing the correct project in hardware is dependent upon a few important dimensions. The critical dimension is the window's mounting dimension, as shown below. This dimension is profile specific and is the total distance from the external operable sash to the first available area for mounting the keeper. The handle's geometry dictates the cam dimension and the appropriate keeper to use. These hardware dimensions can be found in the following catalog pages.



The following simple formula can then be used to determine the correct dimensions.

$$\text{Cam Dimension} = \text{Mounting Dimension} + \text{Keeper Thickness}$$

For example, a window with a mounting dimension of $5/16"$ could use a handle with a cam dimension of $7/16"$ plus a keeper with $1/8"$ thickness. $7/16" = 5/16" + 1/8"$

In the case of a flush mount condition, where the frame and sash profiles are inline, the same equation can be utilized.