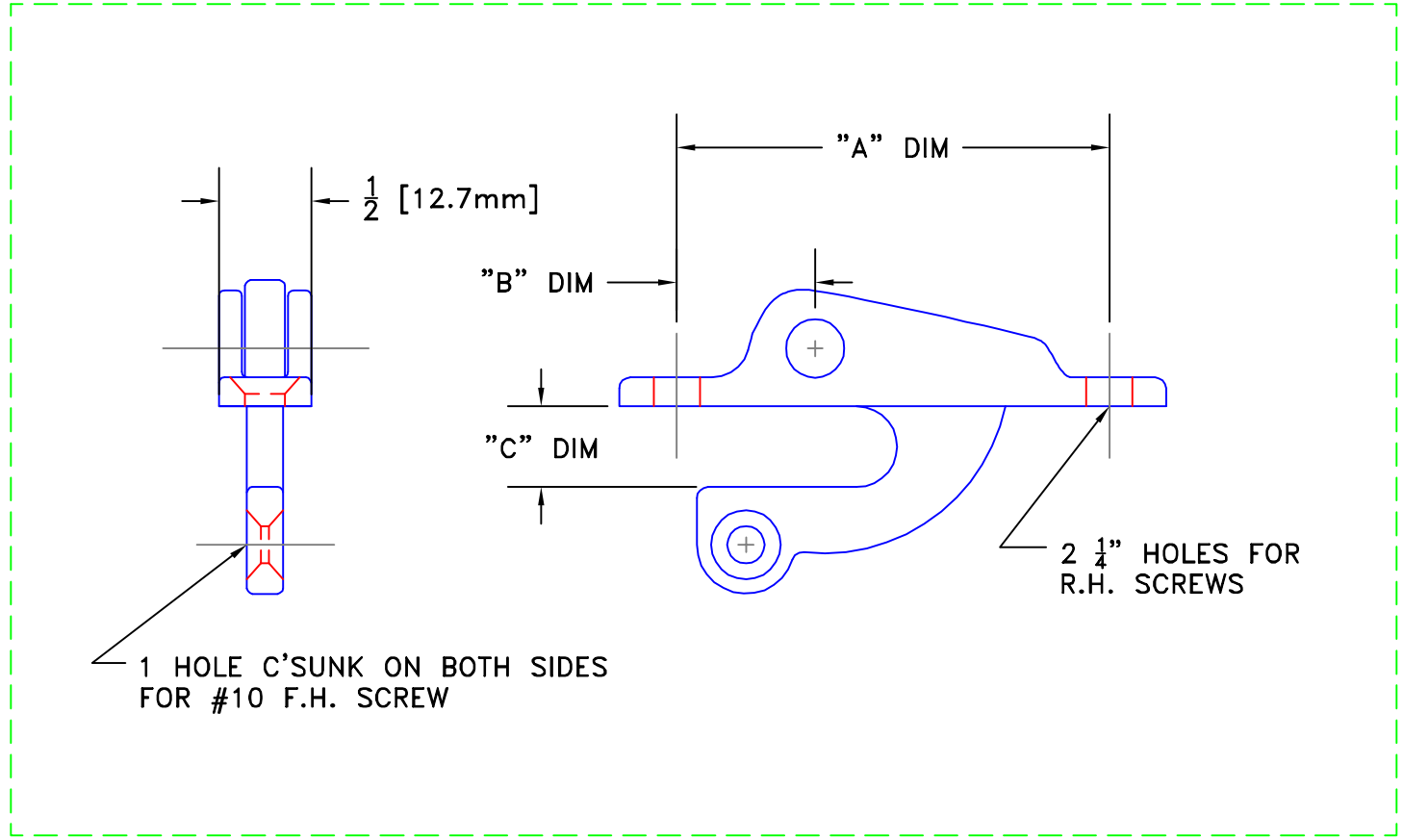


Rev	CHANGE	Date
A	EST'B DRAWING FOR CATALOG	9/7/06



DESCRIPTION	<b>LATCH</b>	
DRAWN BY	GAG	9/7/06
APPROVED BY	GAG	9/7/06
<b>BRONZE CRAFT CATALOG DRAWING</b>		

INTELLECTUAL PROPERTY NOTICE:  
THIS DRAWING AND THE DESIGN REPRESENTED HEREIN ARE THE INTELLECTUAL PROPERTY OF THE BRONZE CRAFT CORPORATION, NASHUA, NH, USA.  
REPRODUCTION OF THIS DOCUMENT OR THE DESIGN DEPICTED HEREIN, WITHOUT EXPRESS WRITTEN CONSENT OF THE BRONZE CRAFT CORPORATION IS PROHIBITED.  
© 2005

TOLERANCES UNLESS OTHERWISE SPECIFIED:  
MACHINED FEAT. ± 1/64  
DECIMAL XX ± .01  
XXX ± .005  
ANGULAR ± 1°  
HOLE DIA. +.003/- .002

<b>THE BRONZE CRAFT CORP.</b> NASHUA, N.H.	
B/C ITEM NUMBER	<b>134 001</b>
CONSISTANT WITH PRODUCTION REV. <b>H</b>	